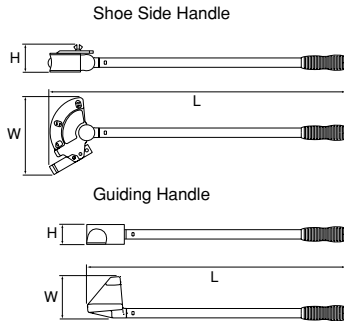


● PIPE BENDER FOR STAINLESS FLEXIBLE PIPE



PIPE BENDER FOR STAINLESS FLEXIBLE PIPE

No.	Shoe Side Handle			Guiding Handle			▼kg	📦
	W	H	L	W	H	L		
FV30	210	77	803	112	65	700	3.5	1

Purpose

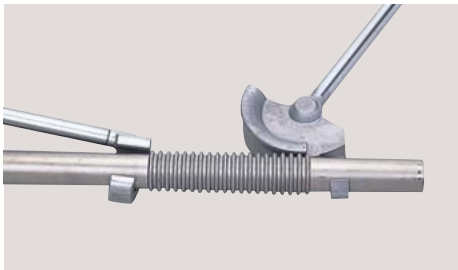
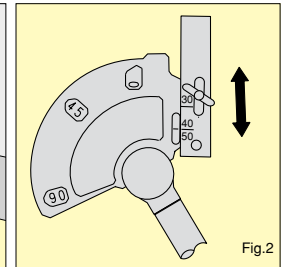
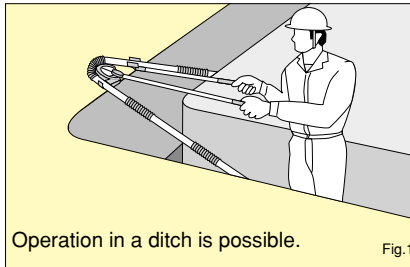
● A special tool for bending wavy stainless steel pipes used in piping from water supply pipe to meter up to 90 degrees.

Application

● Wavy Stainless Steel Pipes Nomination 30su, 40su, 50su.
 (Cannot be used for bending any other types of pipes.)

Features

- Use of guiding handle ; eliminates need of setting the pipe on the ground. Operation in a ditch (for piping) is possible (Fig.1).
- No need for complicated preparations. You can quickly, easily and smoothly bend the stainless steel pipe.
- With indication of angle (Fig.2).
- Mobile hook enables most appropriate bending for the pipe size.
- Made of high strength aluminum, the tool is light and easy to carry around.

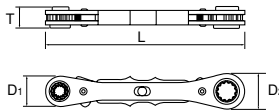


4 SIZE STANDARD RATCHET BOXEND WRENCH

No.	Size	D ₁	D ₂	T	L	▼g	📦
MR-0813	8×12 · 10×13	21	25	15	143	130	10
-1014	10×13 · 12×14	25	28	15	166	160	10

Features

- Thin socket convenient for work in narrow spaces.
- Side is green which stands out in working environment. Made of resin and light.
- Wave shape grip : hand-fitted and easy to transmit force.



● 4 SIZE STANDARD RATCHET BOXEND WRENCH



- CAUTION**
- The changeover switch must be operated properly to prevent breakages and idling.
 - For temporary tightening only. Do not carry out the final tightening adjustment with this tool.

4 SIZE LONG RATCHET BOXEND WRENCH

No.	Size	h ₁	h ₂	h ₃	h ₄	D ₁	D ₂	T ₁	T ₂	L	▼g	📦
MR-0813L	8×12 · 10×13	10	17.5	15	17.5	21	25	34.5	44.5	143	180	10
-1014L	10×13 · 12×14	15	18	15	30	25	28	39.5	57.5	166	230	10

A "must" for piping work. Works in various situations.

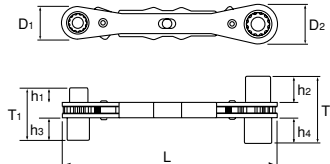


Purpose

● Tightening various cable way or piping support materials.

Features

- Long socket enables to work in deep sections.
- Side is green which stands out in working environment. Made of resin and light.
- Wave shape grip ; hand-fitted and easy to transmit force.



● 4 SIZE LONG RATCHET BOXEND WRENCH



- CAUTION**
- The changeover switch must be operated properly to prevent breakages and idling.
 - For temporary tightening only. Do not carry out the final tightening adjustment with this tool.